

CONTEXT

WCEOLP WYONG- PALLIATIVE CARE UNIT (PCU)

Review of Environmental Factors (REF) Report / April 2024



“

*CONTEXT acknowledges the
Traditional Custodians of the land, and
recognises Elders past and present.
Through authentic engagement with
Aboriginal people and the landscapes
within which we work, we strive to
deepen our understanding of Country
and our relationship with its People.*

WCEOLP Wyong - Palliative Care Unit (PCU)

by

CONTEXT Landscape Architecture

in collaboration with BVN for

Health Infrastructure NSW

Context and our design team collaborators acknowledge the Traditional Custodians of the land, and recognise Elders past and present.

Through authentic engagement with Aboriginal people and the landscapes within which we work, we strive to deepen our understanding of Country and our relationship with its People.

Document Control

Revision	Date	Description	By	Approved
A	22.01.2024	SD	JX	SJ
B	13.03/2024	REF	JM	SJ
C	27.03.2024	REF	JM	SJ
D	05.04.2024	REF	JM	SJ

Contents

Landscape Principles	01
Key Moves	05
Precedents	03
Overall Landscape Plan	04
Detail Landscape Plan	05
Sections/Views	06
Preliminary Planting Schedule	07
Select Planting Palette	08
Materials Schedule 01	09
Landscape Design Statement	10

Site Analysis

Local Context

Vegetation Community: Hunter Coast Lowland Apple-Bloodwood Forest and Dry Sclerophyll Forests (Shrubby sub-formation)

Geology: The site sits on top of the Tuggerah formations which is composed of grey to green-grey laminite, to red-brown claystone and siltstone, (in turn interbedded with) fine- to medium-grained green-grey sandstone.

Location: The site sits within the Tuggerah Lake catchment.

Eco tones



CONTEXT

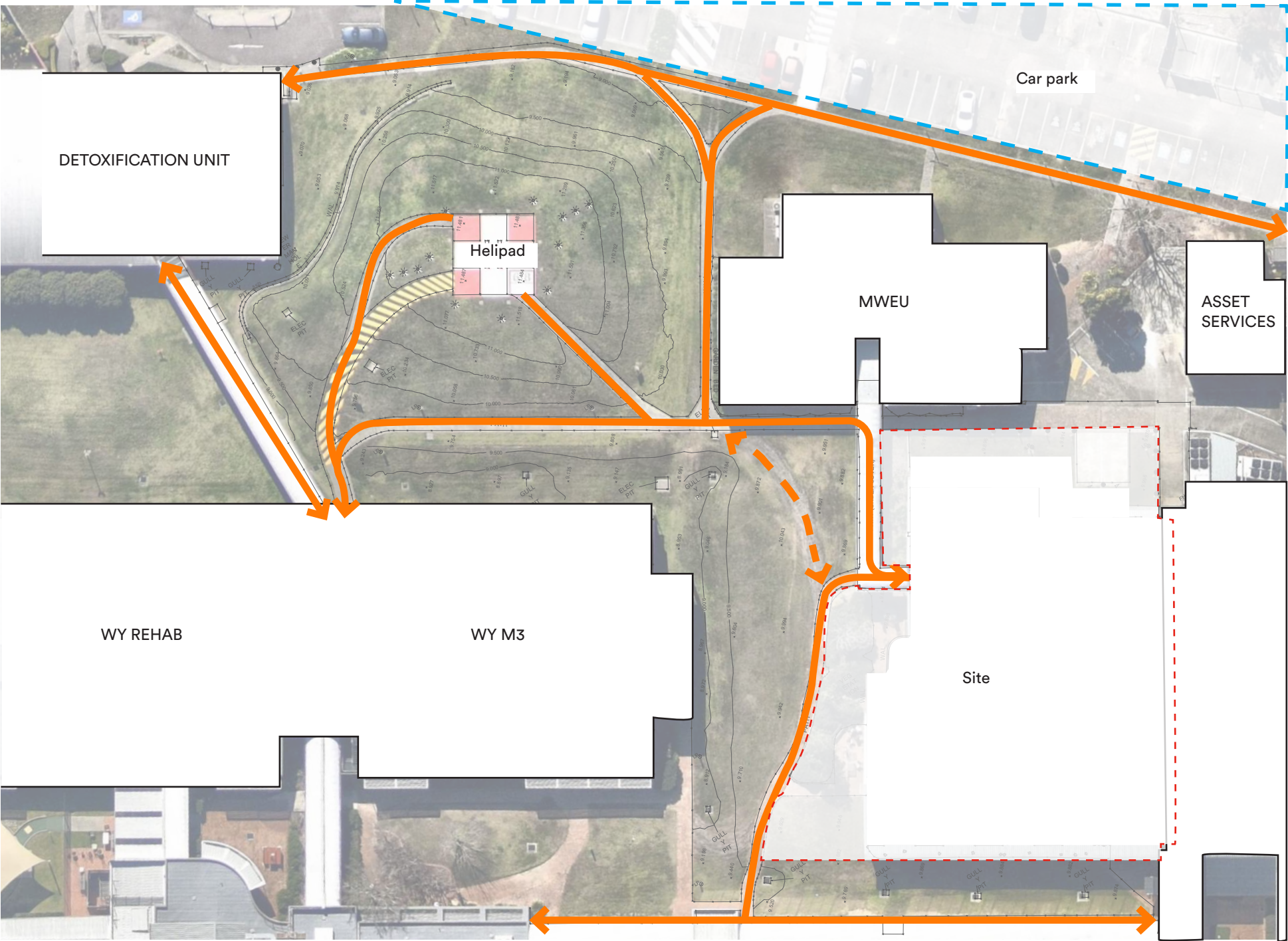


Site Analysis

- Existing Circulation
- ↔

Pathway
- ↔ - - ↔

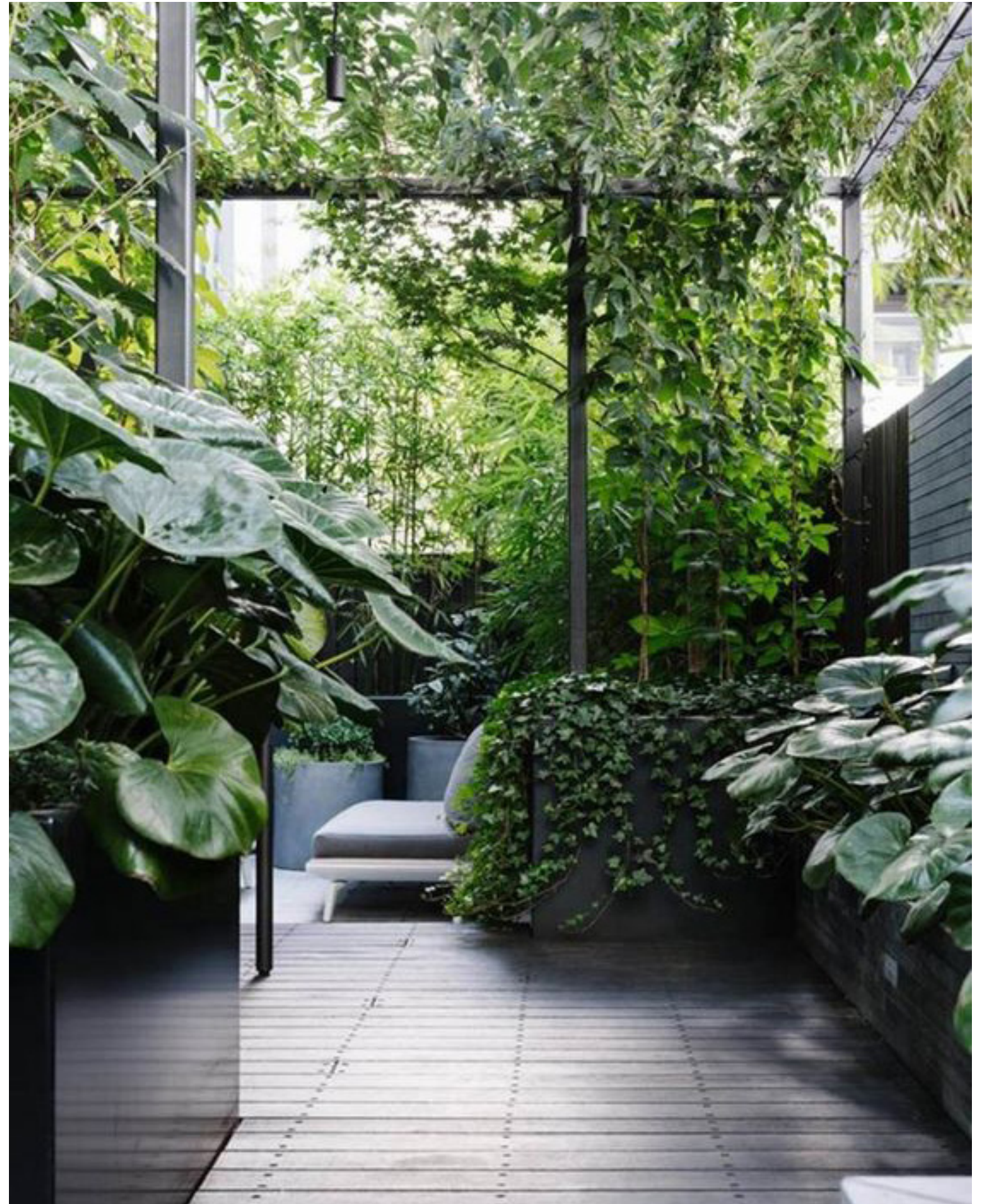
Desire line / 'goat track'
- Hospital carparking



Vision

COURTYARD GARDEN

AN OASIS WITHIN



CONTEXT

WCEOLP WYONG- PALLIATIVE CARE UNIT (PCU) /
REVIEW OF ENVIRONMENTAL FACTORS (REF) REPORT / APRIL 2024

Landscape Principles



01 / CONNECTING TO CONTEXT

- Strong connection to local landscape character
- Country
- Geology
- Planting Character - drought tolerant species to reduce maintenance
- Seasonal
- Eco tones



02 / BIOPHILIA

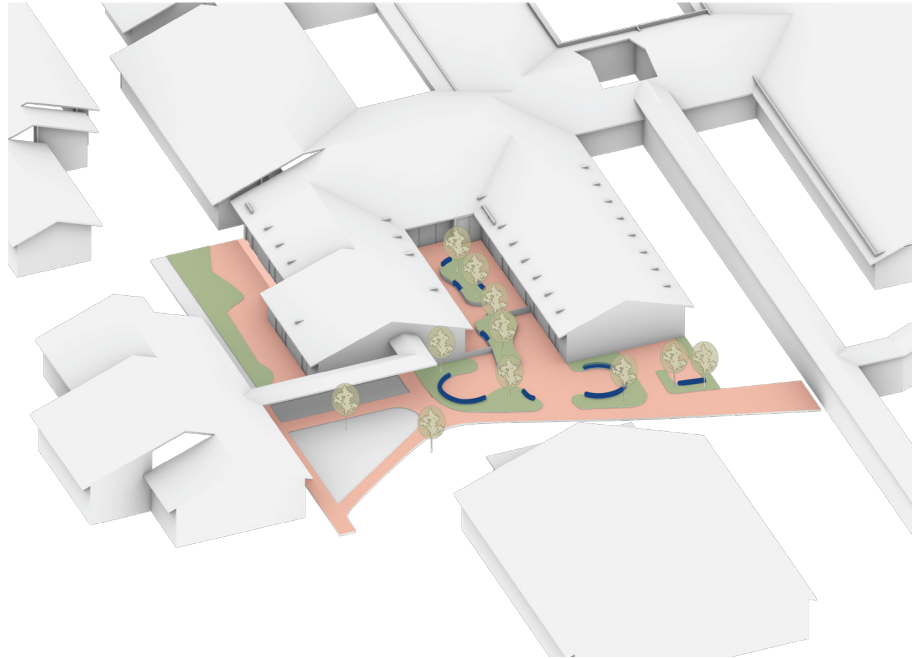
- The opportunity to always look or be within greenery
- Internal spaces frame unique landscapes
- Environmental and visual amenity
- Patterns in the landscape (soft topiary of understorey planting) to evoke rhythm and calm
- Engaging with the senses, touch, feel, sight, smell, sound
- Feature species chosen for their sensory qualities.



03 / HUMAN COMFORT

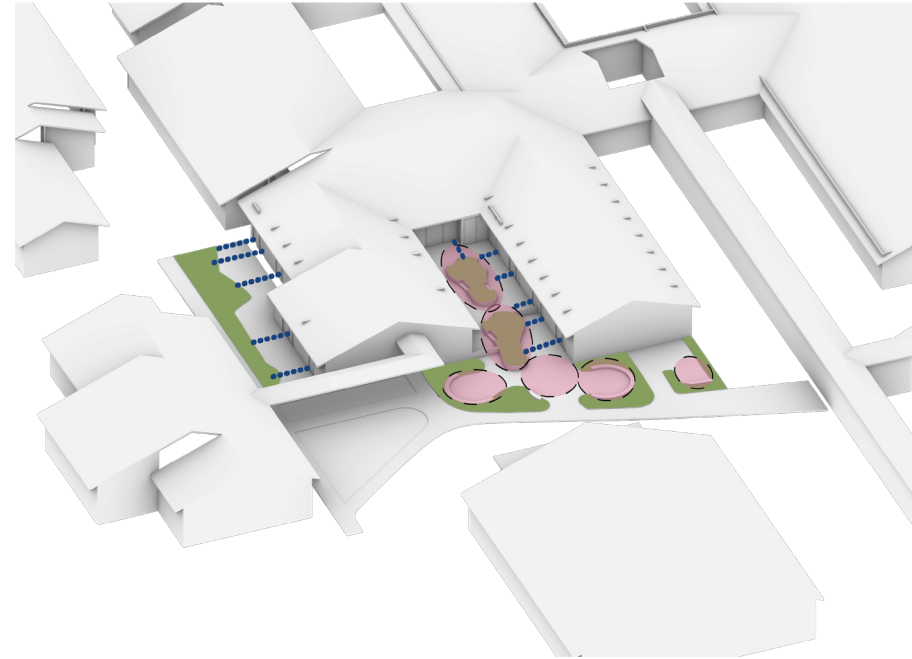
- Rich diversity of landscape spaces that provide for users including patients, families and staff.
- - The Verandahs
 - Spiritual Meeting
 - Central Garden
 - Communal
 - Lobby and Dining
 - Staff Retreat

Key Moves



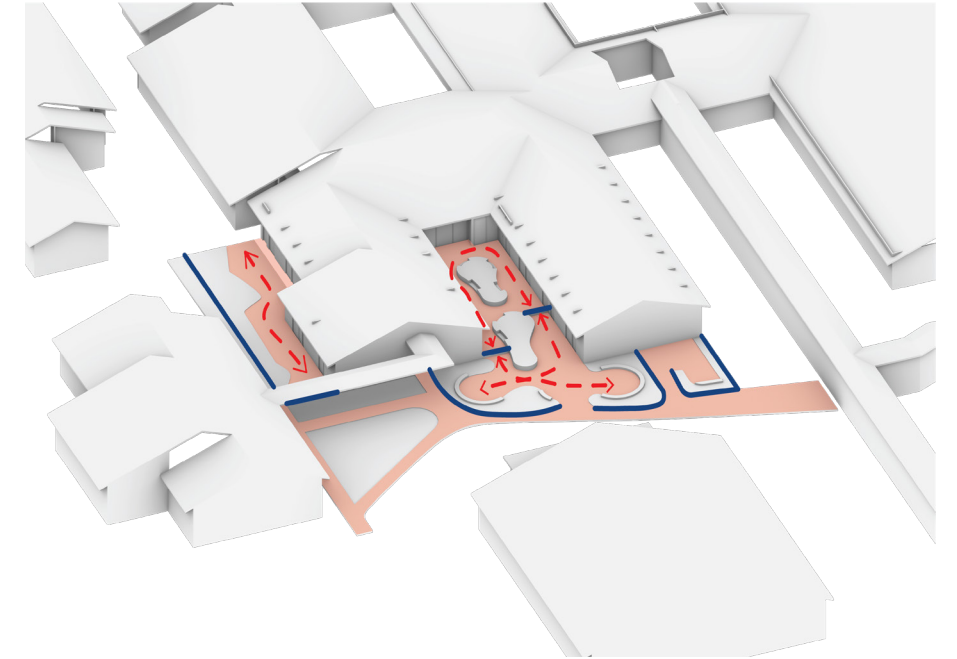
01 / DESIGN HIERARCHY

- Clear Definition of spaces
- Ground plane - materials define outdoor rooms.
- Planting - as mechanism to organise spaces.
- Amenity - seating facilities and bbq
- Comfort - shade, privacy, screening



02 / PRIVATE VS COMMUNAL

- Physical timber screening elements separating patient rooms
- Shrubs and plants are used to screen from surroundings



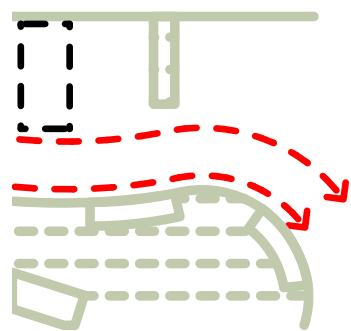
03 / OPERATIONS

- An accessible ground plane throughout all landscape areas
- Maintain a minimum clearance of 2000mm for ease of bed movement
- Provide a secure line using fencing, gates and planting

Place Framework

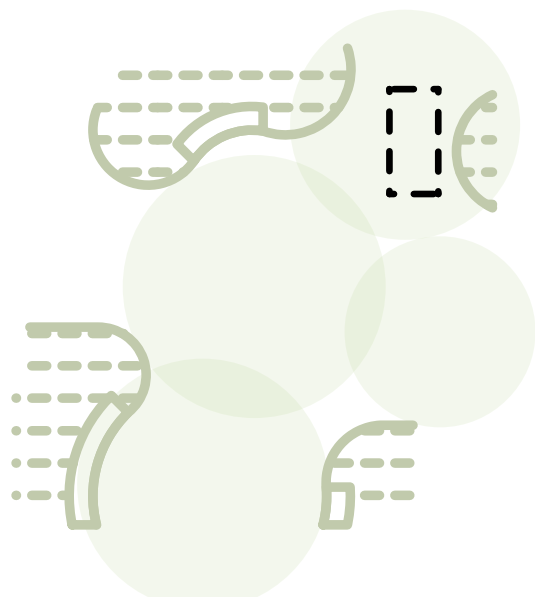


Experiential & Operational Requirements



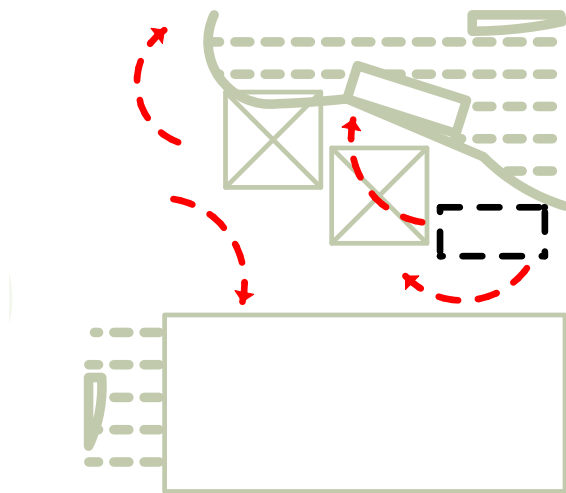
01 / CIRCULATION

Clear movement of bed through the landscape & courtyard spaces



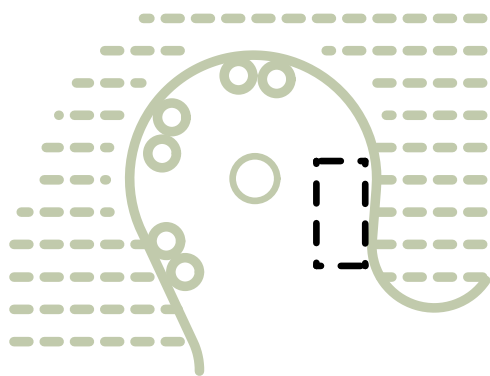
02 / LANDSCAPE LOBBY

Creating a landscape entry experience



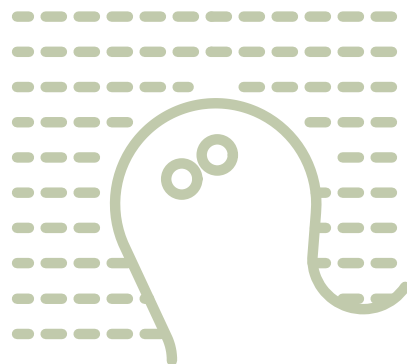
03 / COMMUNAL GATHERING

Create an environment for bed to engage with the communal facilities



04 / GATHER

Allowing for patianets in beds and visitors to gather for spiritual or communal events



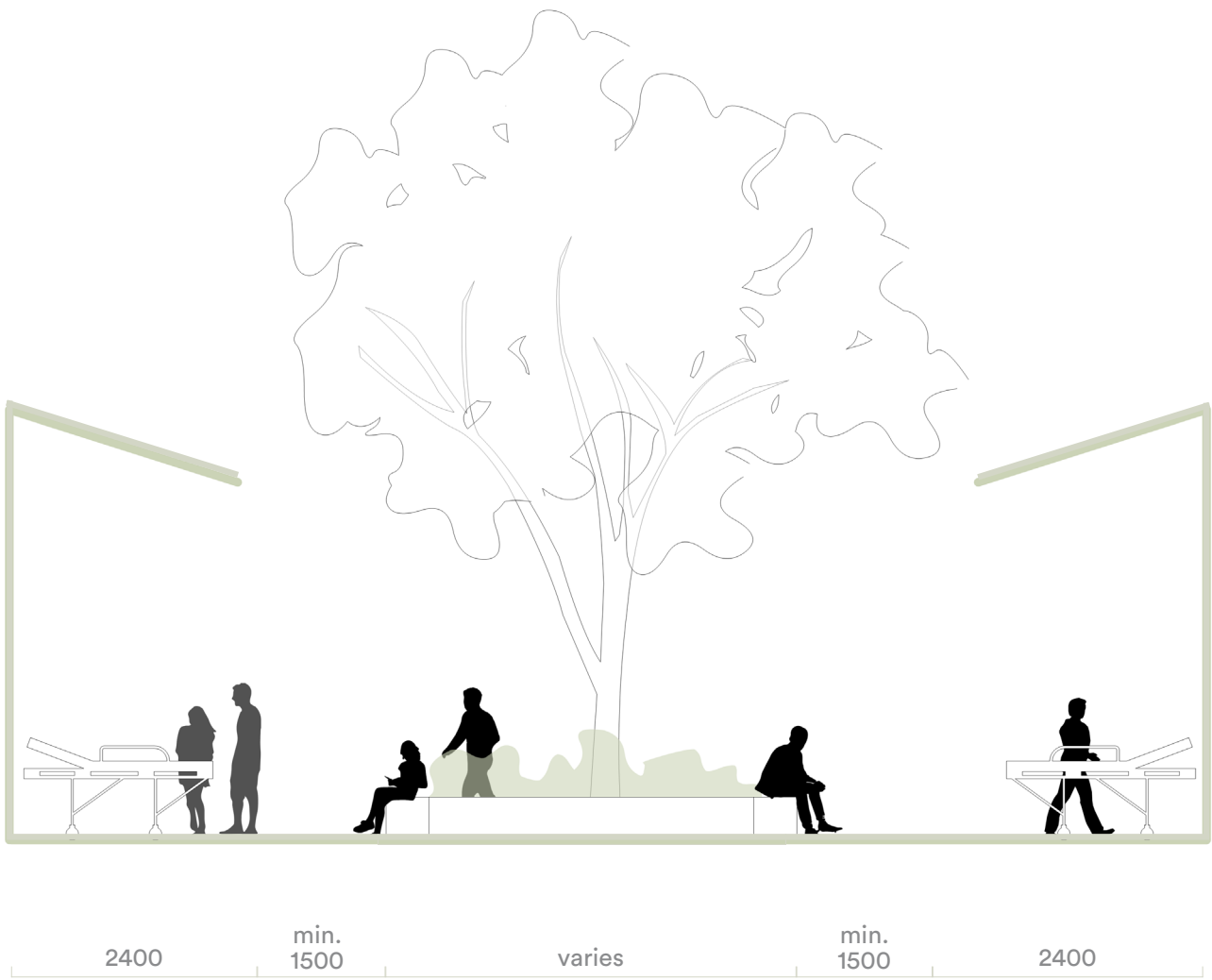
05 / RETREAT

The creation of spaces for staff to retreat from patient areas

Spatial Studies



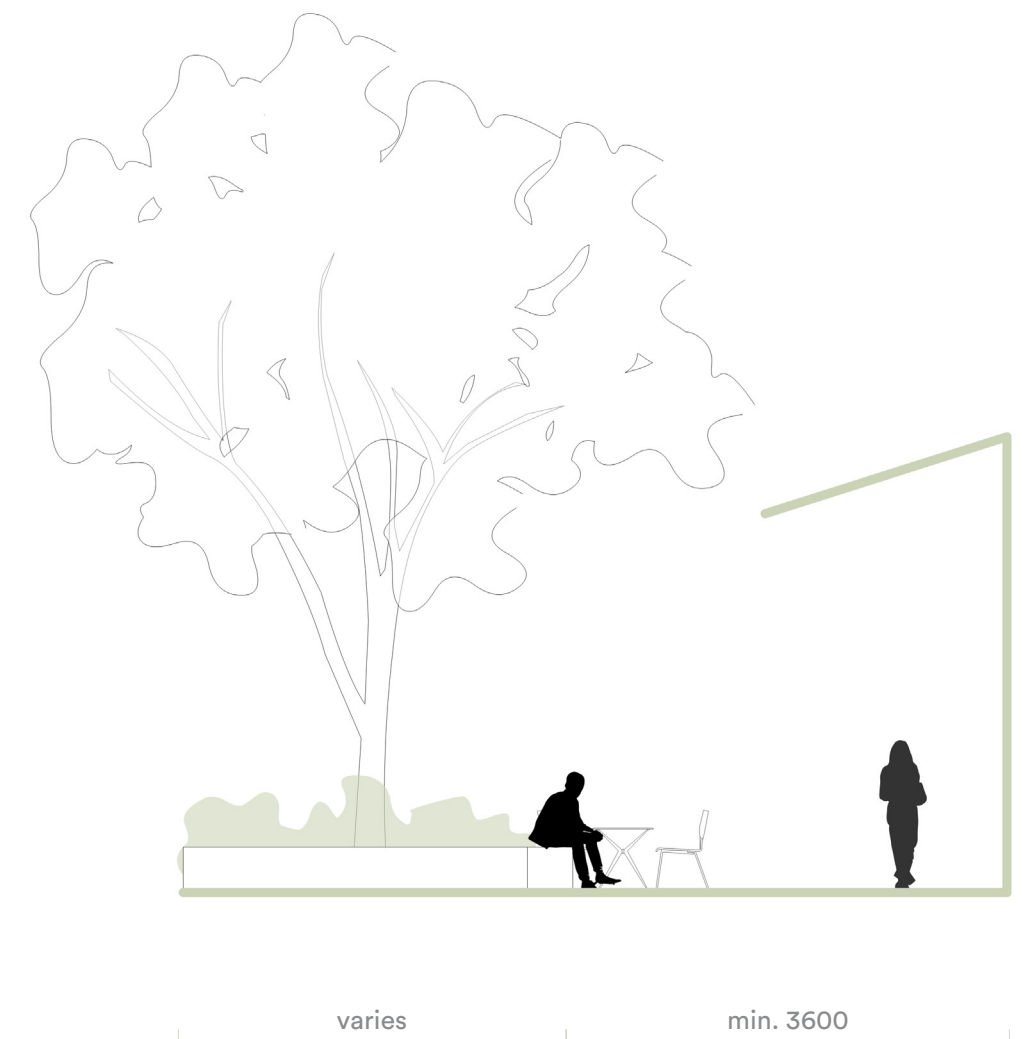
01 / BED MOVEMENT



02 / INTERNAL RELATIONSHIP

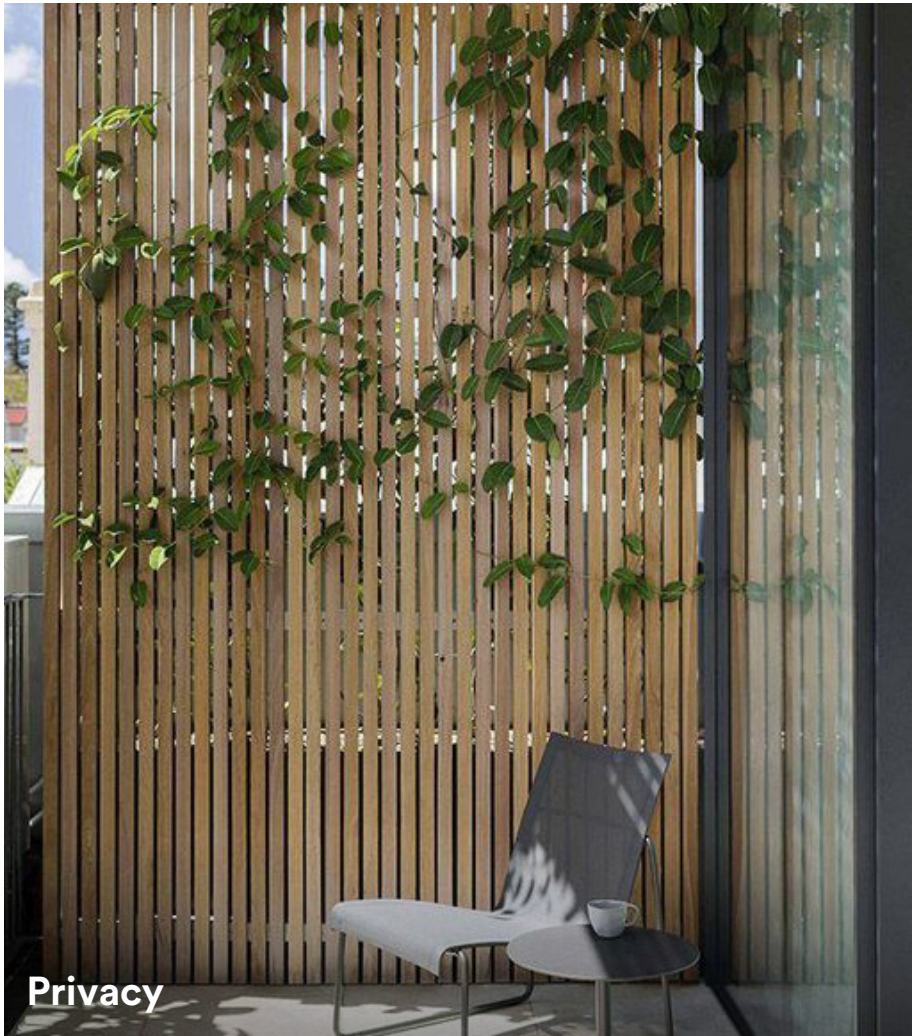


03 / COMMUNAL SPACE



04 / STAFF RETREAT

Precedents - Study



Overall Landscape Plan

- 1

The Verandahs
- 2

Central Garden
- 3

Spiritual meeting
- 4

Communal meeting
- 5

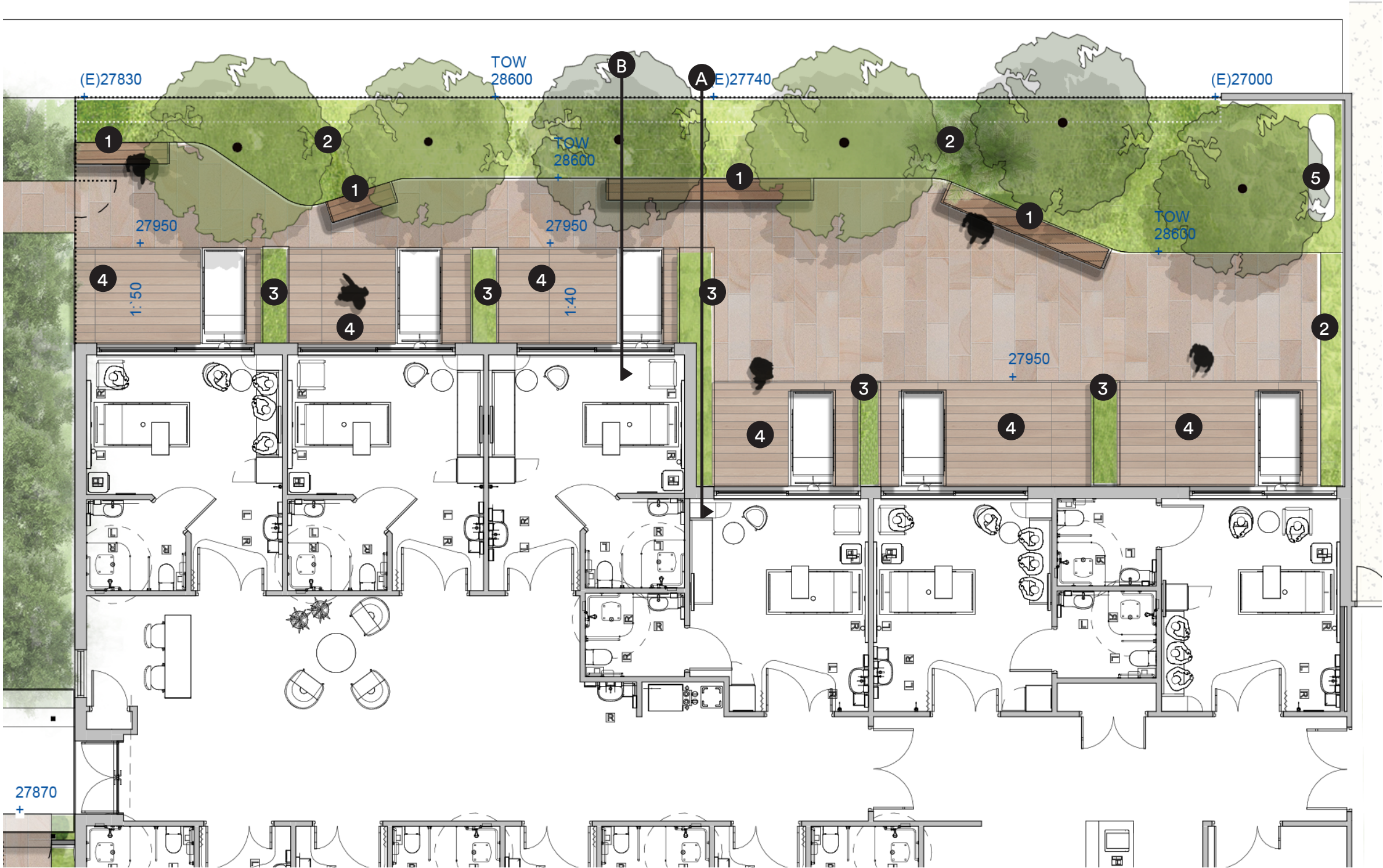
Staff retreat
- 6

Rain Water tank
- Existing Path
- Secure Line
- Existing Trees - to be retained

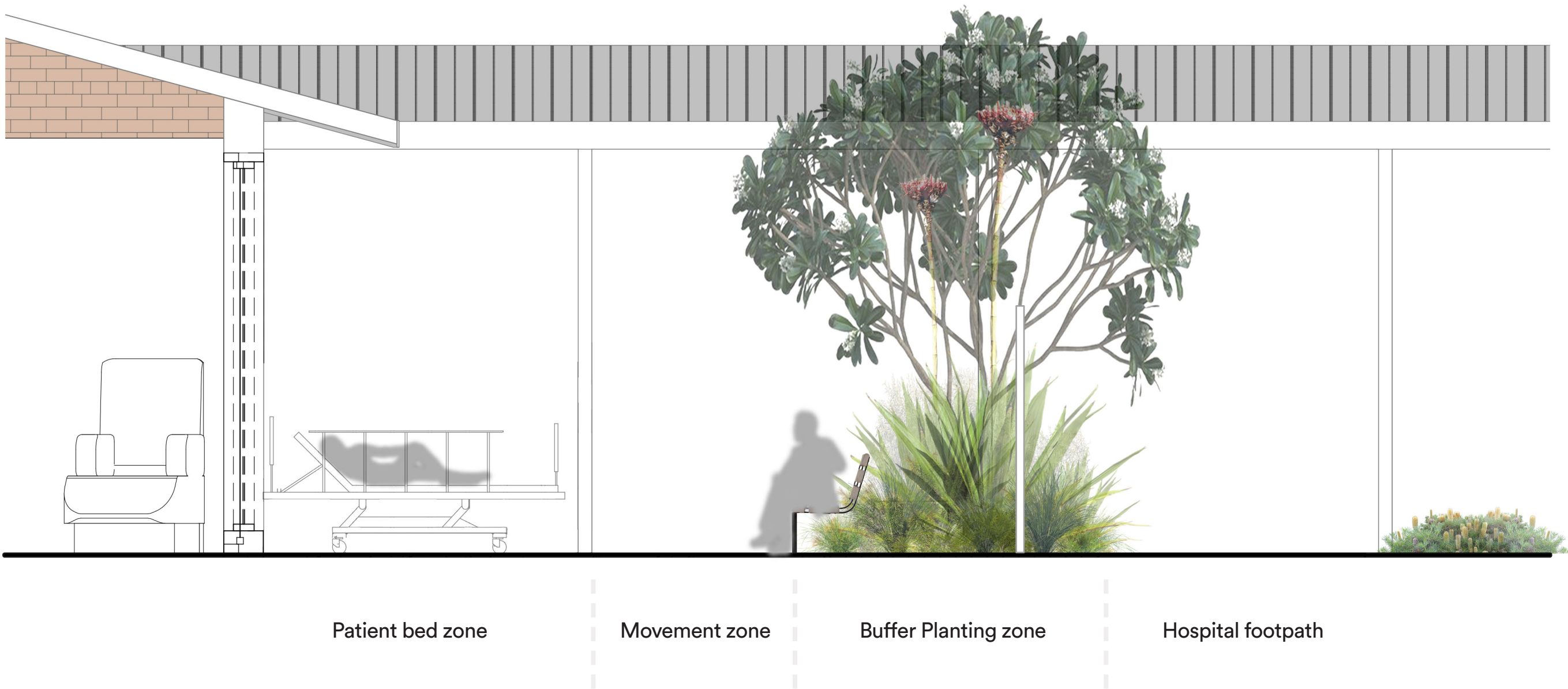


Detail Landscape Plan - The Verandah

- A generous landscaped border screens the verandahs from the nearby path. With a seating edge to the garden visitors can sit immersed in the garden and if they wish and interact with other neighboring family groups.
- Space has been allowed for beds to be fully maneuvered within the spaces and to take advantage of the garden.



The Verandah Section



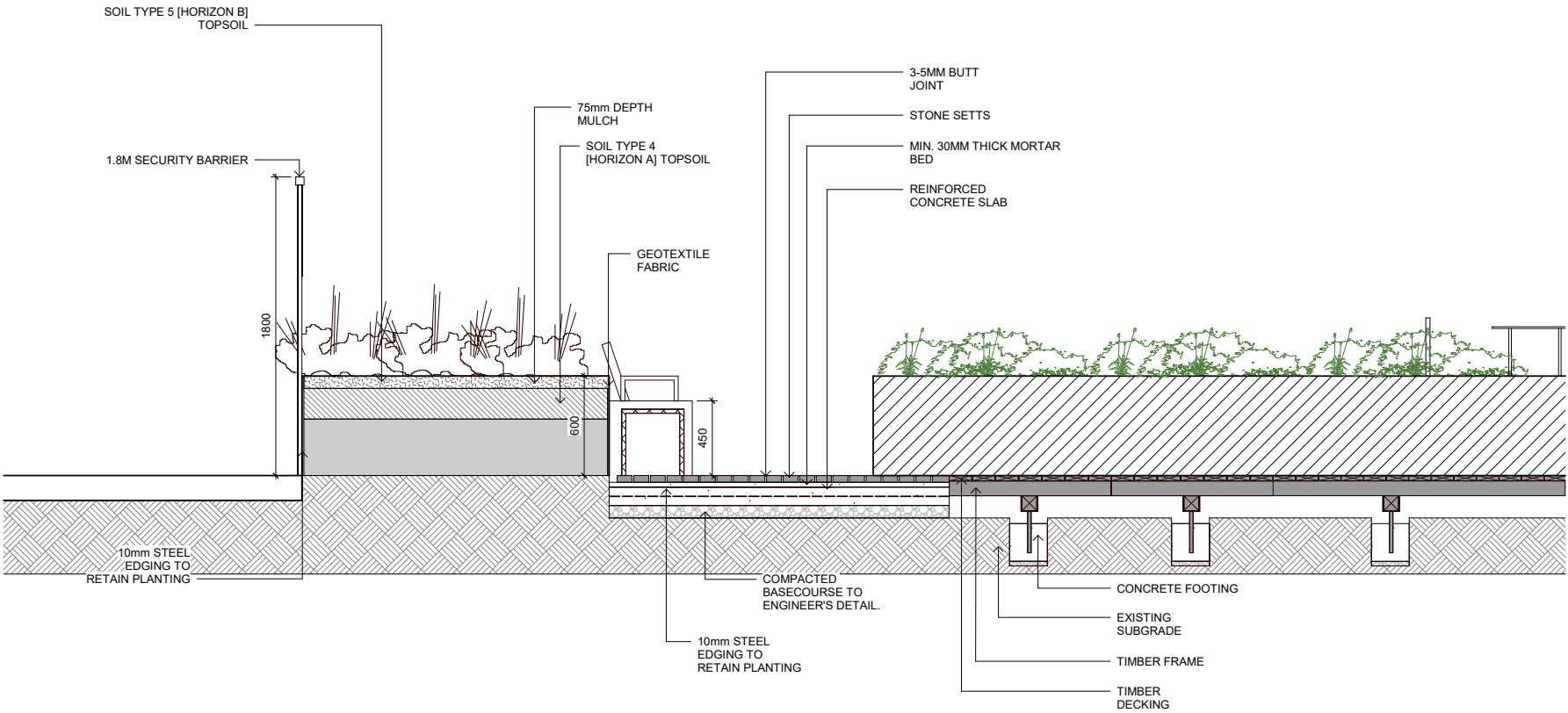
Patient bed zone

Movement zone

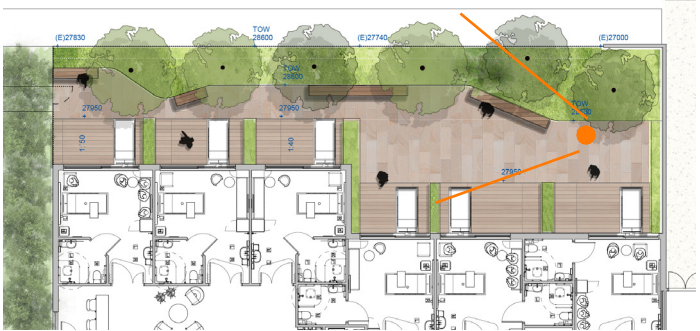
Buffer Planting zone

Hospital footpath

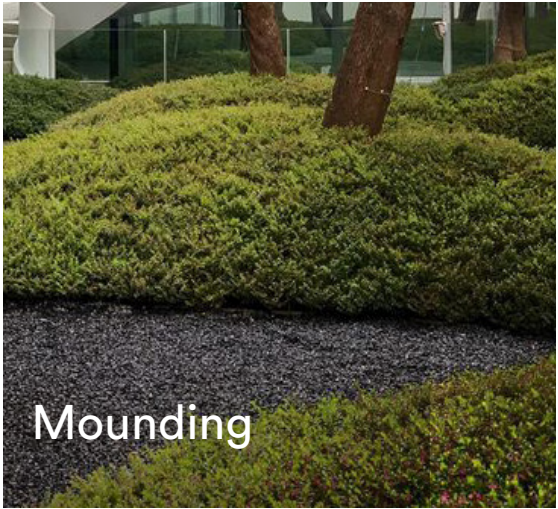
The Verandah Detailed Section



The Verandah View



The Verandah Precedents



Detail Landscape Plan - Central Courtyard

- A central contemplation garden can be viewed in the round working as a backdrop to the patient's bedrooms and creating an edge to the communal spaces.
- Significant feature trees placed in this central area will create seasonal delight and allow for light to penetrate into the space in the cooler months.



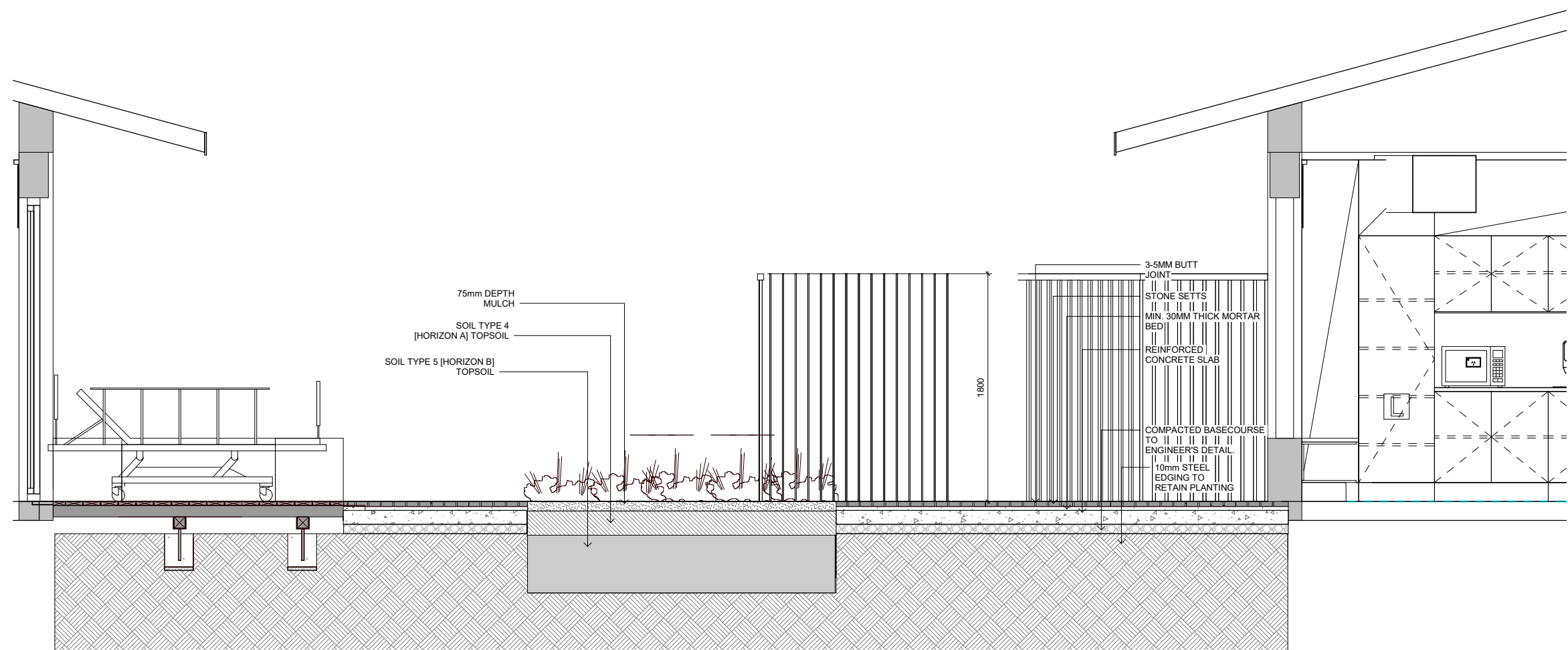
- 1 Access Gate
- 2 Seating Edges
- 3 Planting with feature trees
- 4 Privacy Planting Screen
- Secure Line
- Existing Trees - to be retained
(subject to Arborists appraisal)



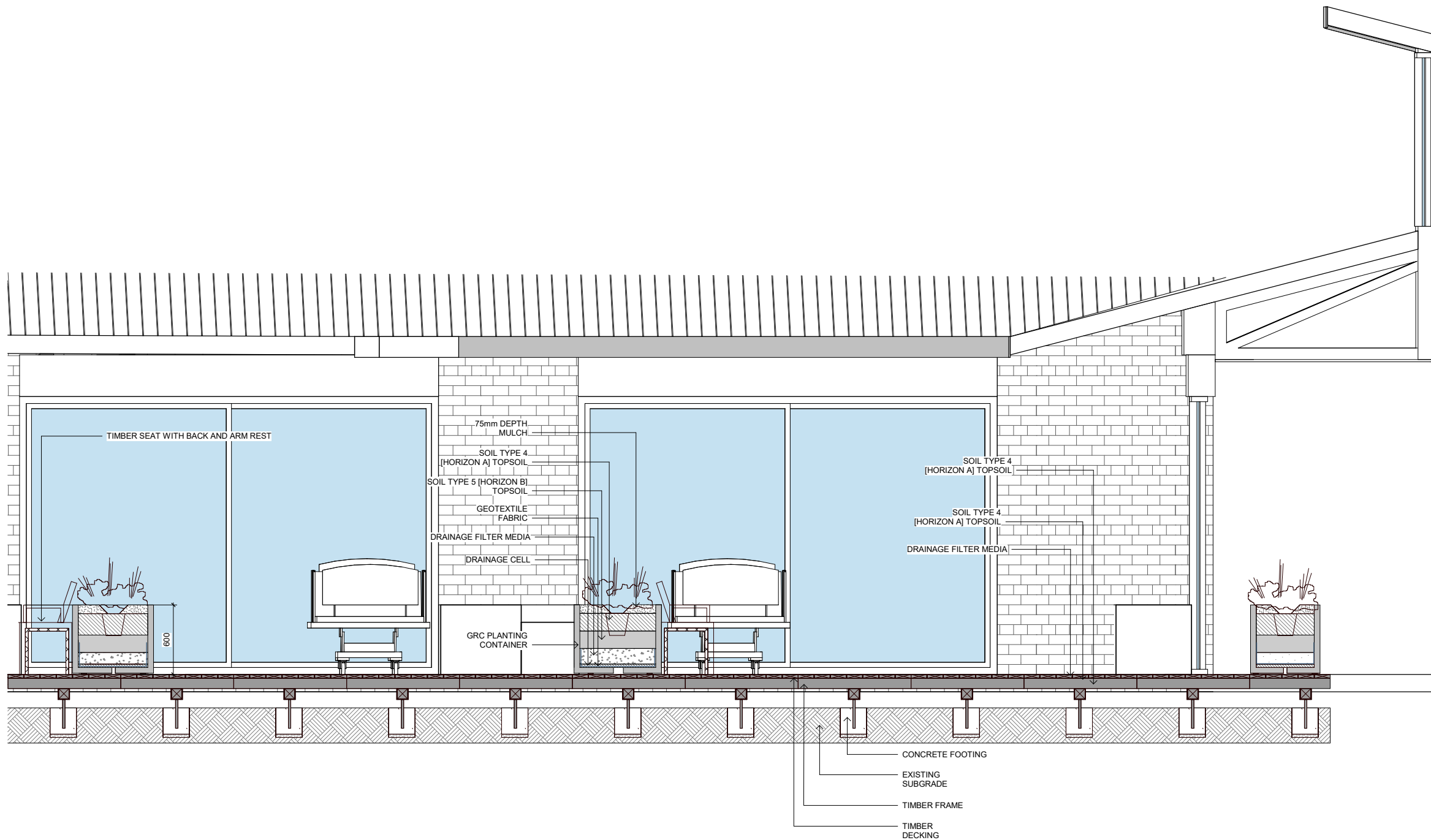
Central Courtyard Section



Central Courtyard Detailed Section



Central Courtyard Detailed Section



Central Courtyard View



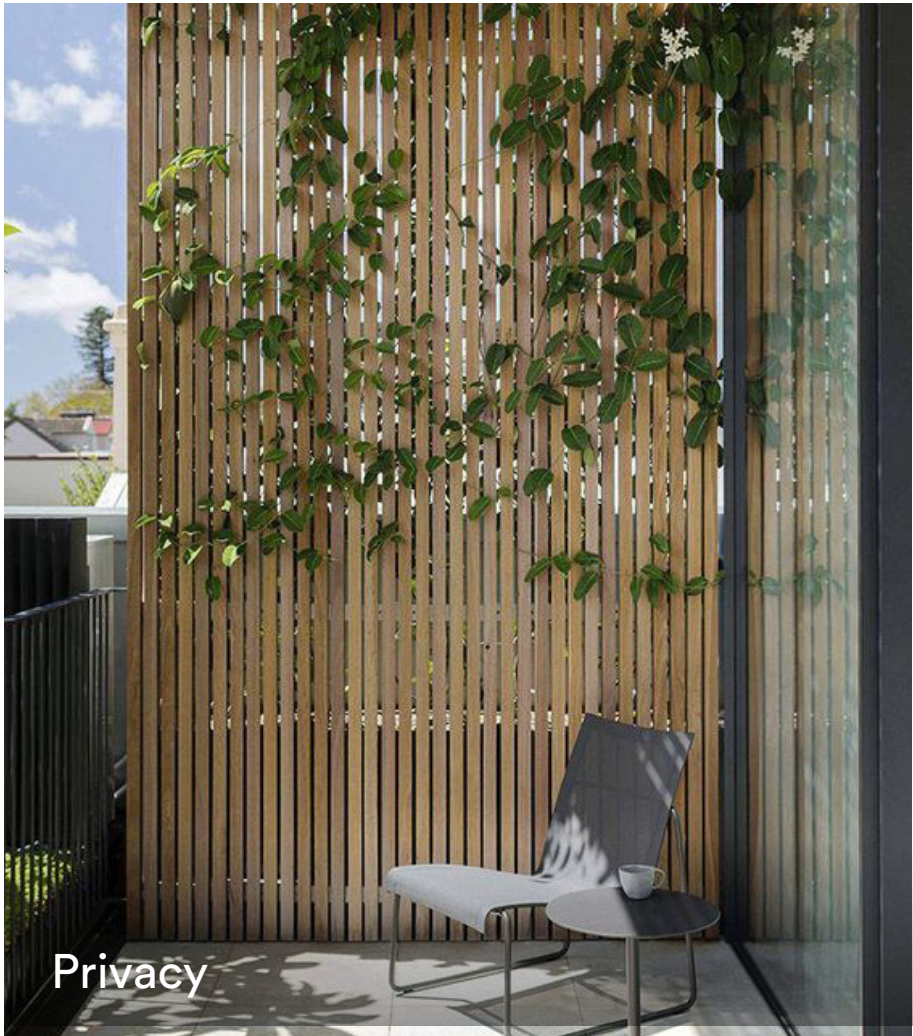
Central Courtyard Precedents



Look & Feel



Ornamental trees



Privacy



Decked private patio and gravel



Soft planting



Detail Landscape Plan - Communal Areas

LOBBY

- A welcoming space bound by feature trees
- Access to seating and amenity.

SPIRITUAL SPACE

- Positioned to allow for privacy,
- A circular area is carved out of the planted edge
- flexible space for meeting.

OUTDOOR DINING

- A central communal area
- Facilities for alfresco cooking and dining

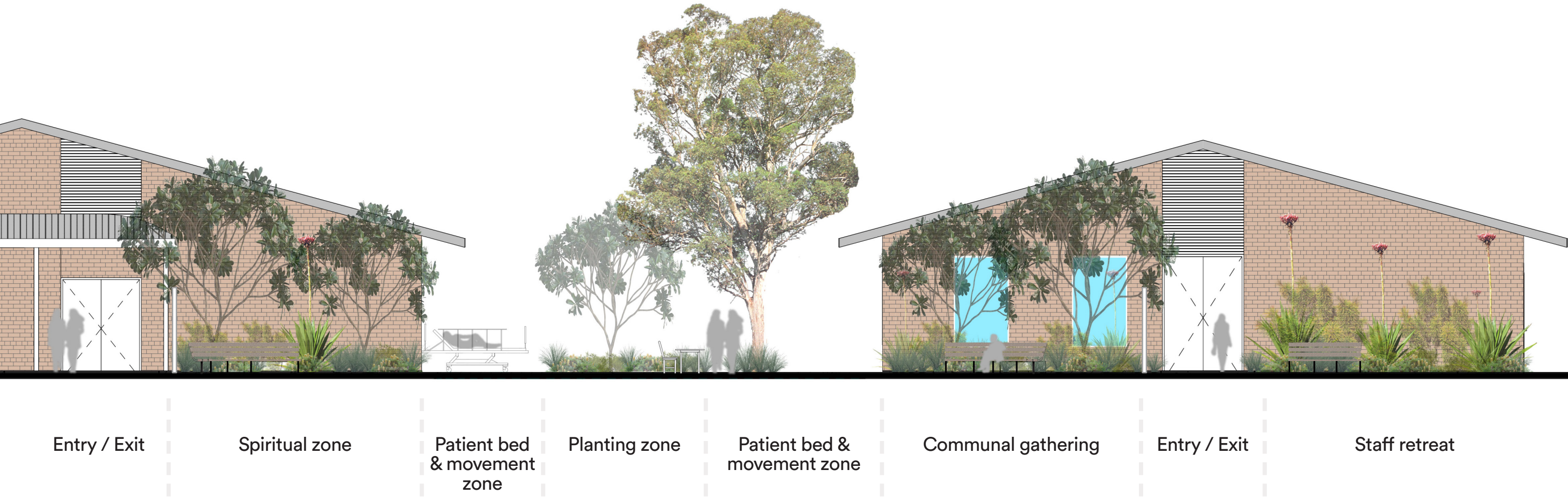
COMMUNAL GATHERING

- A simple space with options for flexible arrangements to accommodate all users.
- Seating edges focus back into the dining and central garden.
- Families can assemble in small groups with direct access to the communal spaces within the building.

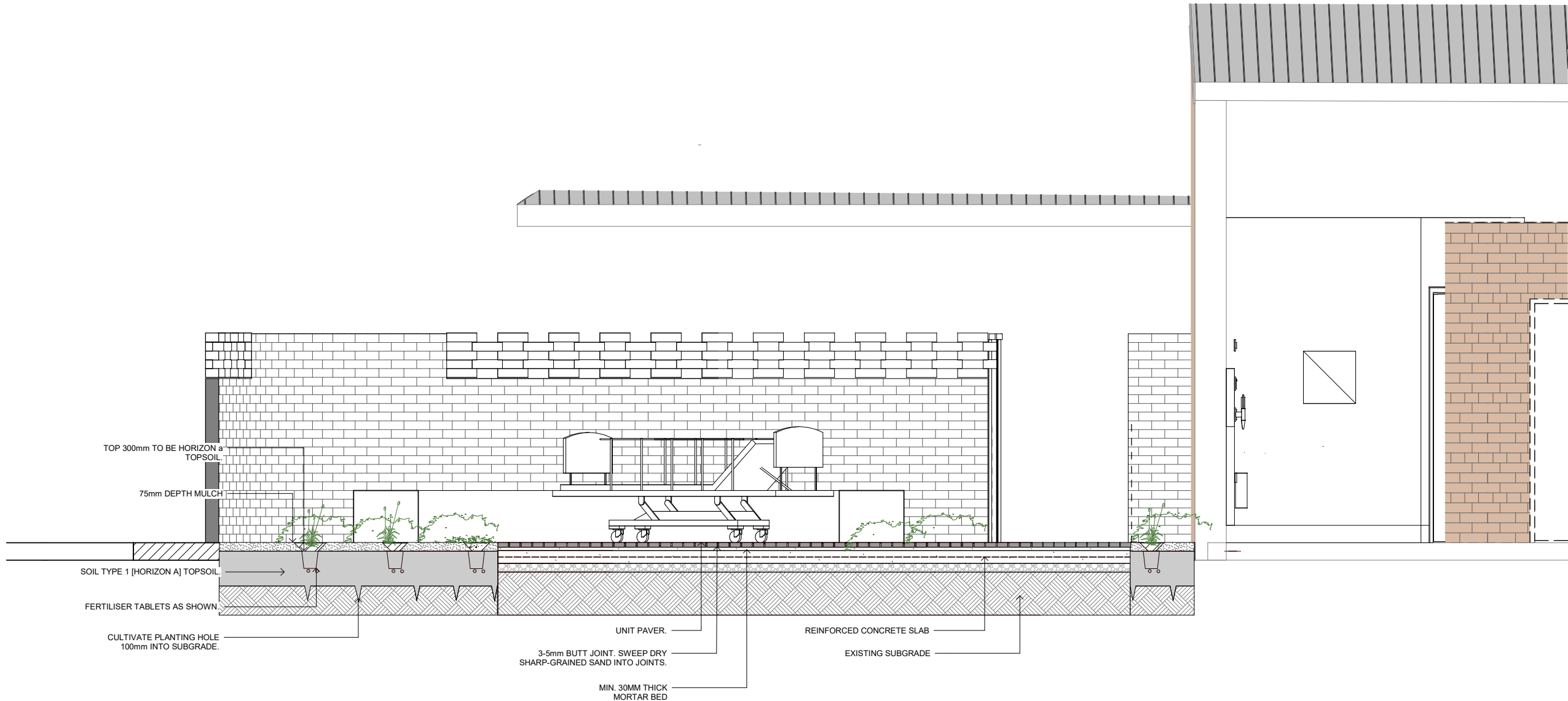
- 1 Seating Edges
- 2 Planting with feature trees
- 3 Privacy Planting Screen
- 4 Perimeter Wall
- 5 Dining zone
- Existing Path



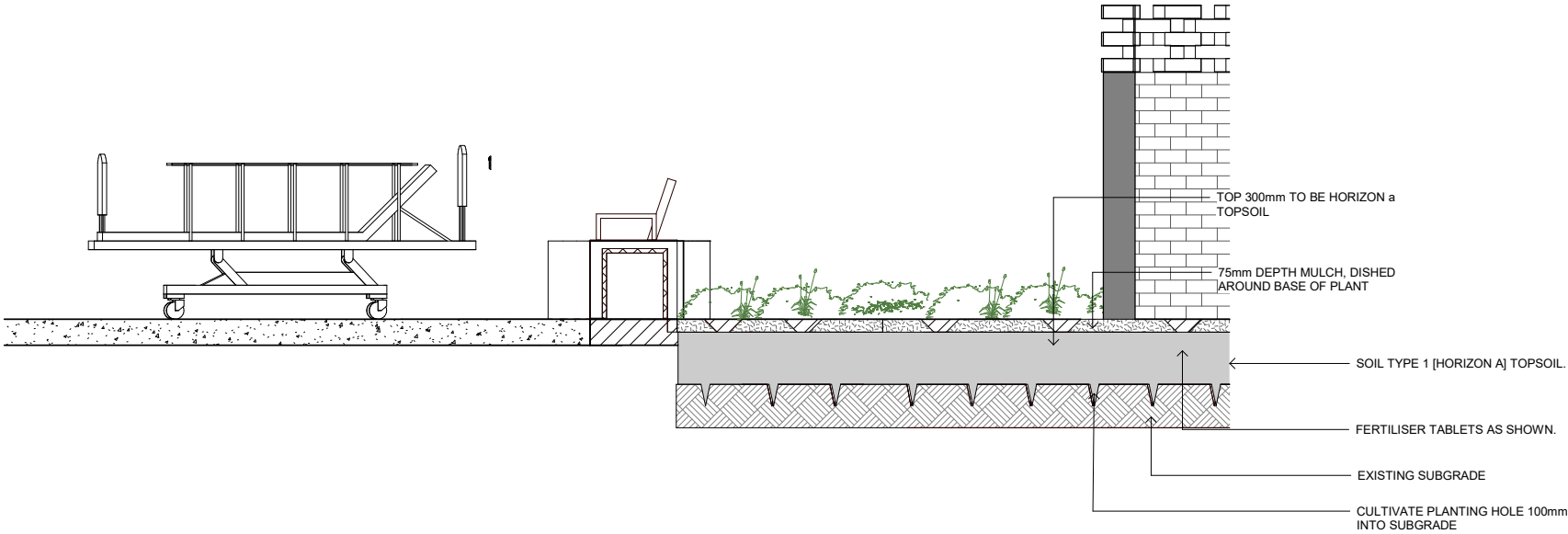
Communal Area Section



Communal Area Detailed Section



Communal Area Detailed Section



Communal Area View



Communal Area Precedents



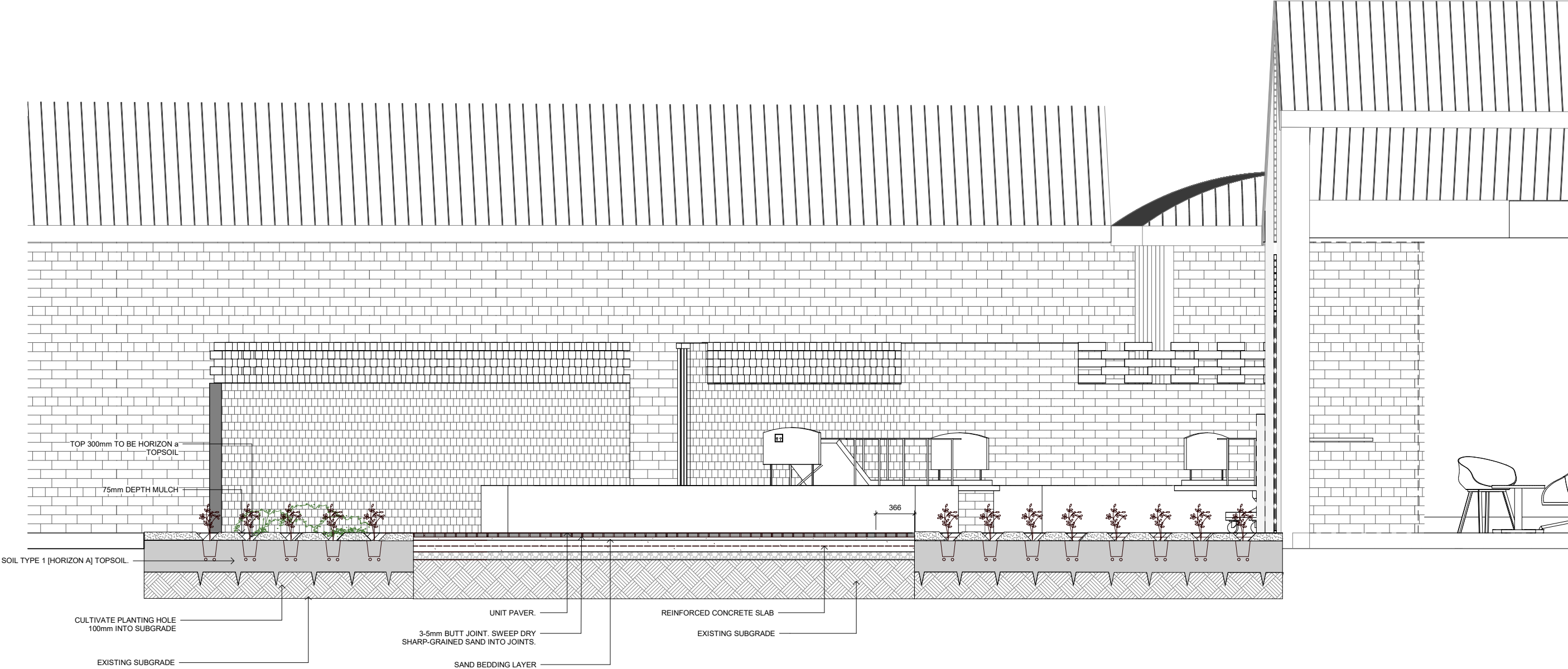
Detail Landscape Plan - Staff Retreat

The staff retreat is located to maximise privacy while allowing access to the clinical facilities. A simple seating nook surrounded by lush planting provides a backdrop to some quiet time out.

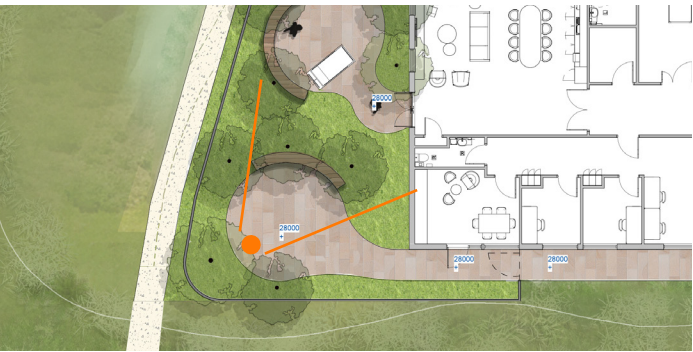


- 1 Seating Edges
- 2 Planting with feature trees
- 3 Perimeter Wall
- 4 Swale
- Existing Path

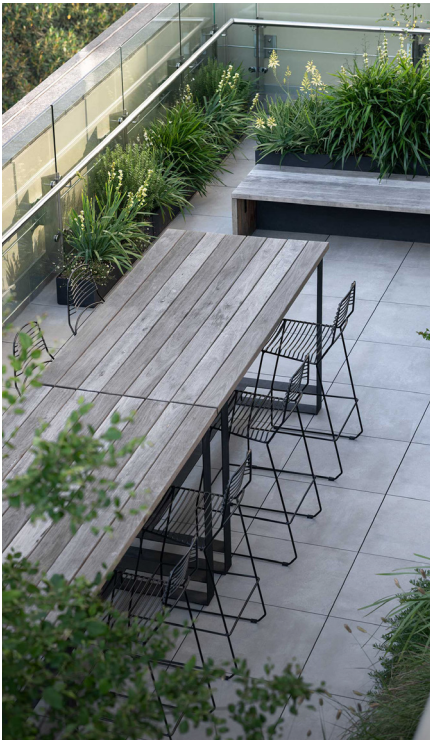
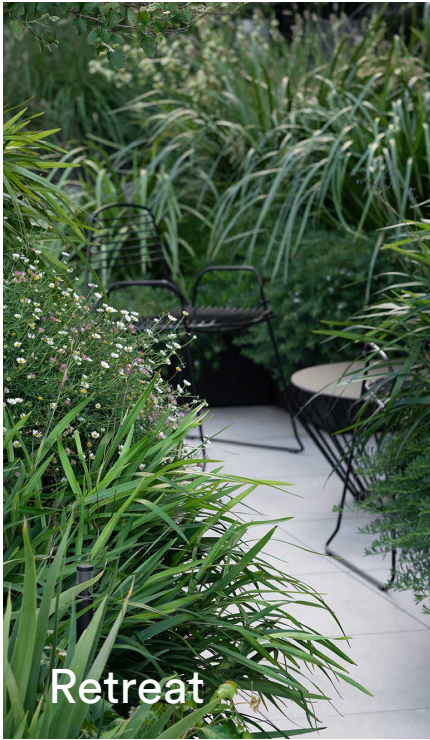
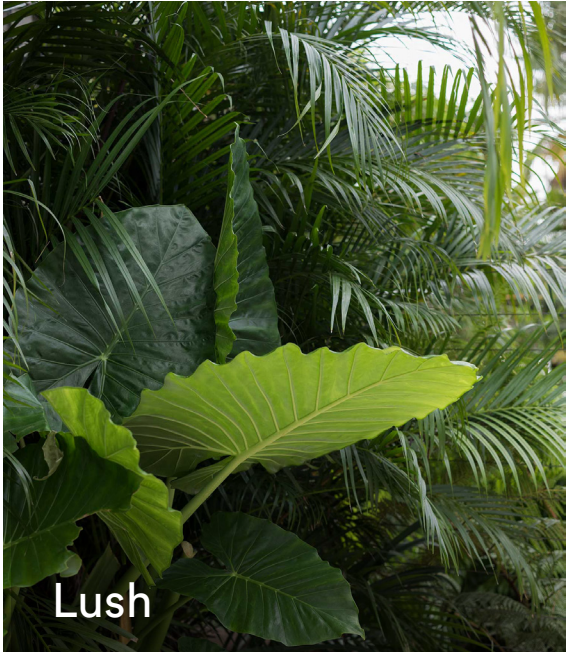
Staff Retreat Detailed Section



Staff Retreat View



Staff Retreat Precedents



Planting Palette

Botanic Name	Common Name	Mature Size	Pot Size	Provenance	Quantity
TREES					
<i>Banksia serrata</i>	Old Man Banksia	5-16m	200L	native	4
<i>Hymenosporum flavum</i>	Native Frangipani	3-8m	100L	native	5
SHRUBS, HEDGES & SCREENING					
<i>Acmena smithii</i>	Lilly Pilly	3-5m	45L	native	9
<i>Banksia spinulosa</i>	Hairpin Banksia	2m	45L	native	10
<i>Banksia robur</i>	Swamp Banksia	3m	45L	native	3
<i>Cordyline stricta</i>	Slender Palm Lily	5m	45L	native	10
<i>Doryanthes excelsa</i>	Gymea Lily	2-4 x 2-3m	45L	native	6
<i>Xanthorrhoea media</i>	Grass Tree	0.9-2m	200mm	native	12
GROUNDCOVERS					
<i>Allium amplexoprasum</i>	Wild leek	0.9-1.2m x 0.3-0.6m	140mm	-	60
<i>Baloskion tetraphyllum</i>	Tassel Cord Rush	0.5-1.8 x 0.45-1.5m	200mm	native	30
<i>Bulbine bulbosa</i>	Native leek	0.5-0.8m x 0.3-0.5m	140mm	native	90
<i>Craspedia variabilis</i>	Billy buttons	0.1m-0.3m	200mm	native	25
<i>Crowea saligna 'Rosy Glow'</i>	Wax Flower	0.8-1m x 0.6-1m	45L	native	40
<i>Goodenia ovata</i>	Hop Goodenia	0.1-0.3 x 1-2m	200mm	native	20
<i>Hibbertia obtusifolia</i>	Hoary guinea flower	1m x 1m	140mm	native	20
<i>Lomandra longifolia 'Tanika'</i>	Mat Rush	0.5m x 0.75m	140mm	native	100
<i>Pelargonium 'Applause'</i>	Native Geranium	0.6m x 0.4m	200mm	native	30
<i>Prostanthera incisa</i>	Cut-leaf Mint Bush	1m	200mm	native	50
<i>Pycnosorus globosus</i>	Billy Buttons	0.3-1 x 0.2-0.5m	200mm	native	50
<i>Tetratheca thymifolia</i>	Black Eyed Susan	0.5-1m x 0.5-0.75m	200mm	native	30
<i>Wahlenbergia capillaris</i>	Tufted bluebell	0.2-0.8m	200mm	native	30
VINES, CREEPERS					
<i>Hibbertia dentata</i>	Twining Guinea Flower	1-2m	200mm	native	15
HERB GARDEN					
<i>Citrus x meyeri</i>	Meyer Lemon Tree	2-3m	45L	-	1
<i>Mentha spicata</i>	Native Spearmint	0.3-0.9m x 0.4-0.6m	140mm	-	5
<i>Rosmarinus officinalis</i>	Rosemary	0.6m-1.8m x 0.6-1.5m	140mm	-	5
<i>Thymus vulgaris</i>	Thyme	1.5m x 0.3m	140mm	-	5
<i>Origanum vulgare</i>	Oregano	1.2m x 0.9m	140mm	-	5



Materials Palette

PAVING

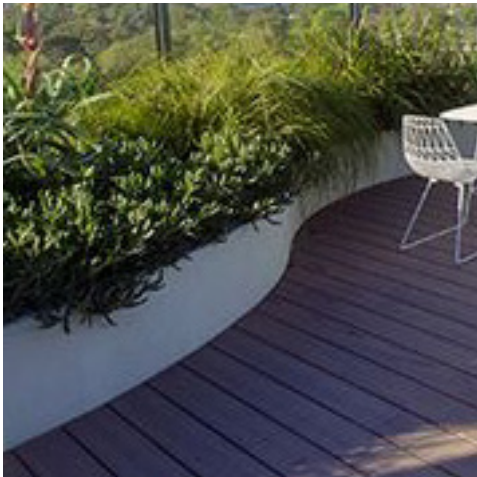


Unit paving



Timber decking

WALLING



Steel edge walling

Urban Elements



Seating with back rest



Integrated seating



outdoor dining / work top



Fire pit

Fencing & Screening



Recycled Brick - Hit a miss screen wall



Timber Palisade fence

Landscape Design Statement

Design Statement

The landscape approach to the palliative care unit upgrade at Wyong Hospital was developed through a series of founding principles, establishing a strong connection to landscape context.

This was achieved in several ways, firstly by the use of endemic plant species, which in turn responds to the geology, soils and climate.

The unique cloistered aspect of the building also guided the careful selection of appropriate plants and responds to the facilities need to provide both private and communal spaces.

The spatial arrangement facilitates a variety of landscape settings and is sensitive to the varied cultural groups that will encounter the space on their journey through life.

Aspects of seasonality have also been threaded through the spaces and will provide unique settings throughout the year, breathing nostalgia and a sense of home to the facility.

The landscape is embedded with the principles of biophilia, allowing views and proximity to green to be maximised.

Private patient rooms frame the garden outside, while dappled light penetrates the internal spaces.

Variations in plants textures, smells and colour allow visitors to experience the landscape.

Comfort for users has been considered, with a variety of landscape rooms that serve the different needs of the users. These rooms include private contemplation spaces for family to gather.

Spaces have been carved out of mass planted areas to provide the opportunity for gathering and spiritual reflection.

Protection and enclosure are provided through a high garden wall achieving the appropriate level of security and refuge from the surrounding building uses.

A special area for staff is designated for quite breaks while emersed in the garden.

Better Places

Better Places is about enhancing the design quality of our built environment, raising expectations and raising standards, about working better and creating better environments. The design has adopted the better places principles through:

- **Contextual, local and of its place:** Connecting with the local context of the Hunter Coast through plant species and material being driven by the local geology and ecotones of the region.
- **Equitable, inclusive and diverse:** There are multiple outdoor spaces that have different functions including a spiritual space, intimate spaces for self reflections, outdoor gathering and for the staff to retreat in their breaks. All the outdoor spaces have been designed for equitable and inclusive access allowing for patients beds to be moved through all areas and interact with these spaces.
- **Enjoyable, safe and comfortable:** All the outdoor spaces have been immersed in landscape with proposed trees providing canopy coverage and human comfort to the spaces.
- **Functional, responsive and fit for purpose:** The outdoor spaces have been programmed in a manor that allowed for patients who are able-bodied, assisted walking or in a bed to be access the different programmed landscapes.
- **Distinctive, visually interesting and appealing:** Plant species and material have been based of ecotones and ecologies from the areas which provide a unique and interesting visual character to the spaces.

Draft Greener Places

The aim of Greener Places is to create healthier and more livable cities and towns by improving open space recreation and urban canopy coverage. The design has been driven by the greener places guidelines, with canopy coverage being a key driver fro the outdoor spaces ensuring that large canopy trees have been co-located with outdoor spaces to increase human comfort.

Design Guide for Health

The landscape design has been developed on the fundamental design principles of the NSW health design guidelines, the landscape has been designed with dignity with the landscape being welcoming, creating an environment for people to feel safe, cared for and supported during stressful times. The outdoor programming has focused on designing for wellbeing with all patients, visitors and staff having access to greenery and gardens of different scales with both visual and physical connections.

Connecting with Country

A design with country process has been undertaken, with consultations with indigenous user groups. A spiritual space has been designed into the landscape programming that will be further developed in the detail design, which will have consultations with indigenous and First Nation user groups.

CPTED principles

The landscape design has adopted best practice CPTED principles with the planting design and species being curated to allow for vertical and horizontal sight lines to the programmed landscape zone and veranda spaces to allow the hospital staff to monitor patients in the outdoor spaces.



CONTEXT

CONTEXT Landscape Design Pty Ltd
Suite 3.1 | 79 Myrtle Street
Chippendale NSW 2008
t. 61 2 8244 8900
e. context@context.net.au
w. context.net.au
ABN. 14 093 350 719